



# ROUND TAPERED ALUMINUM POLE

18 - 50 ft.

## GENERAL SPECIFICATIONS

**POLE SHAFT** - The pole shaft is spun from seamless alloy aluminum. Shafts will be a one or two piece assembly.

**POLE TOP** - The pole can be provided with a tenon top (for post-top mounting) or with a removable cap (for drilled poles). DECOSPIKE and DECOLED options may also be specified. [Click here for more information on DECOSPIKE and DECOLED options.](#)

**HANDHOLE** - A handhole with cover, attachment hardware, and grounding provision will be provided. Hand hole cover will be rectangular or ovalized depending on design criteria.

**ANCHOR BOLTS** - Anchor bolts are provided on request. Each anchor bolt will include applicable installation hardware.

**ANCHOR BASE** - 4-bolt anchor base is cast from 356 alloy aluminum, heat-treated to a T6 temper.

**BASE COVER** - Full base covers are provided on request. Standard covers are multi-piece square and are painted to match the finish of the pole. Alternatively, anchor bolt covers may be provided.

**FINISH** - Poles may be anodized or polyester powder coated. Wood Sublimation is also available. [Click here for more information on the Wood Sublimation process.](#)

**NOTE** - The specifications presented herein are intended as general guidelines for pole design and performance. Final pole configurations, materials, finishes, and structural details will vary based on project-specific requirements, luminaire selections, site conditions, and applicable codes. The manufacturer reserves the right to select, modify, substitute, or update components and specifications without prior notice to accommodate design improvements, supplier availability, or cost considerations. Detailed, project-specific pole designs and engineering documentation, including load, anchorage, and dimensional data are available upon request.



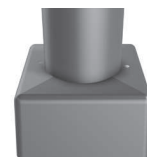
Tenon Top



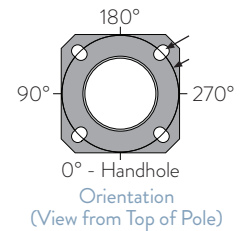
Pole Cap



Ovalized Handhole



Standard Base Cover



## ORDERING INFORMATION

MODEL	HEIGHT	FIXTURE MOUNTING	POLE TOP OPTIONS	FINISH OPTIONS	FINISH	BASE COVER	ANCHOR BOLTS	OPTIONS
RTA Round Tapered Aluminum Pole	18 18'	P1 ø2.38" x 4" Tenon	PC Removeable Pole Top Cap	AND Anodized (Clear/Natural, Black, Bronze, or Sublimation Only)	AND Anodized (Clear/Natural)	FBC Full Base Cover	AB Anchor Bolts Included	FST Festoon Box
	20 20'	P2 ø2.88" x 4" Tenon	PL Plain Top - No Cap		BLK Black	ABC Anchor Bolt Covers		GFCI Festoon, (2) GFCI Outlets, & In-Use Cover <sup>1</sup>
	23 23'	D1 Drilling @ 270°	DECOSPIKE See <a href="#">DECOSPIKE</a> spec sheet for separate ordering information.	POL Polyester Powder Coat (Select Color)	BRZ Bronze		LAB Anchor Bolts Excluded	VD Vibration Damper
	25 25'	D2 Drillings @ 90° & 270°			SLV Silver			
	28 28'	D3 Drillings @ 60°, 180°, & 270°	DECOLED See <a href="#">DECOLED</a> spec sheet for separate ordering information.		WHT White			
	30 30'	D4 Drillings @ 0°, 90°, 180°, & 270°			ELM Elm Wood Sublimation			
	33 33'	D5 Drillings @ 180° & 270°			KEN Kentucky Wood Sublimation			
	35 35'	D6 Drillings @ 90°, 180°, & 270°			PIN Pine Wood Sublimation			
	37 37'	XX Custom Mounting <sup>1</sup>			WAL Walnut Wood Sublimation			
	39 39'				XX Custom <sup>1</sup>			
	48 48'							
	50 50'							

<sup>1</sup>Consult factory for custom ordering information.

Factory assistance is available via phone at 1.720.370.0400 or via email at [info@ragni-group.com](mailto:info@ragni-group.com).

