

- ▶ Unidirectional or Bidirectional Lighting
- ▶ Available in 2 sizes: 3' or 4'
- ▶ Customizable Faceplate: Opt for Finish-Matched, Black Screen-Printed, or Custom Pattern Facade

Lumea Bollard is designed for the subtle illumination and delineation of pedestrian pathways in urban environments. Its minimalist rectangular form blends seamlessly into a wide range of architectural settings while delivering dependable, high-performance lighting.

Available in two heights with unidirectional or bidirectional light distribution, Lumea can be customized with the Dorix embedded spotlight, anti-vandalism protection, and silk screen decorative accents. Functional yet understated, Lumea enhances the visual identity and safety of public spaces without dominating the landscape.



LUMÉA

SPECIFICATIONS

Physical

	Lumea 900	Lumea 1200
Housing	Cast Aluminum	
Lens	Mechanical and Environmental (ME) Resistant Optical Lens	
Height (nominal)	2' 11"	3' 11"
Ingress Protection	IP66	
Impact Resistance	IK10	

Electrical

Power Consumption	From 15 to 27 Watts
LED Voltage	Standard Input Voltage from 120-277 Volts High Input Voltage from 347-480 Volts
Control	Integral LED Driver and Control System. Features Automatic Adjustment, CLO, Graduation via Voltage Variation, DALI, or Zhaga D4i.
Electrical Class	I and II
Operating Temperature	-40° F to 122° F
Lumen Maintenance	L90 B10 > 100,000 Hours
Surge Suppression	Optional Surge Suppressor; Standard Electrical Shock Resistance of 6/10 kV (diff/comm)

Photometrics

Number of LEDs	12 LEDs
CCT	3000K and 4000K Standard; 2200K and 2700K Available on Request
Delivered Lumens	From 1201 to 2331 Lumens
Efficacy	From 81 to 88 Lumens per Watt
BUG Rating	B0-U3-G3

Certifications

NRTL	Luminaire is Certified to North American Safety Standards and Requirements by Nationally Recognized Testing Laboratories.
------	---

Light Distributions

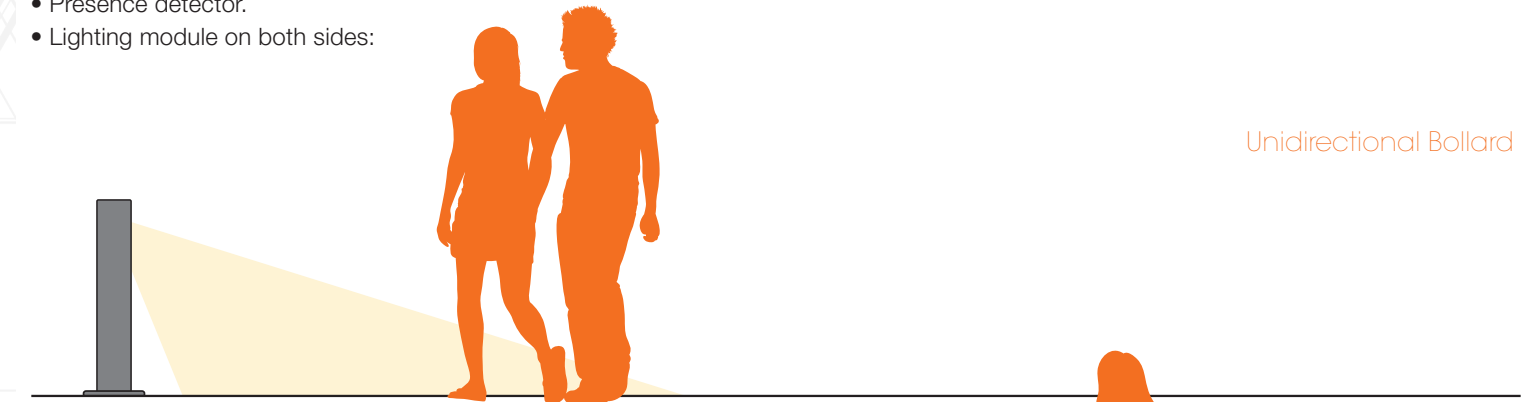
CCT	# of LEDs	350 mA			500 mA			700 mA		
		Watts	Lumens	Efficacy	Watts	Lumens	Efficacy	Watts	Lumens	Efficacy
3000K	12	15	1201	81	20	1650	83	27	2209	82
4000K	12	15	1270	85	20	1741	88	27	2331	87

Rev 20250923 - To continually offer the best product possible, we reserve the right to change, without notice, specifications and/or materials.

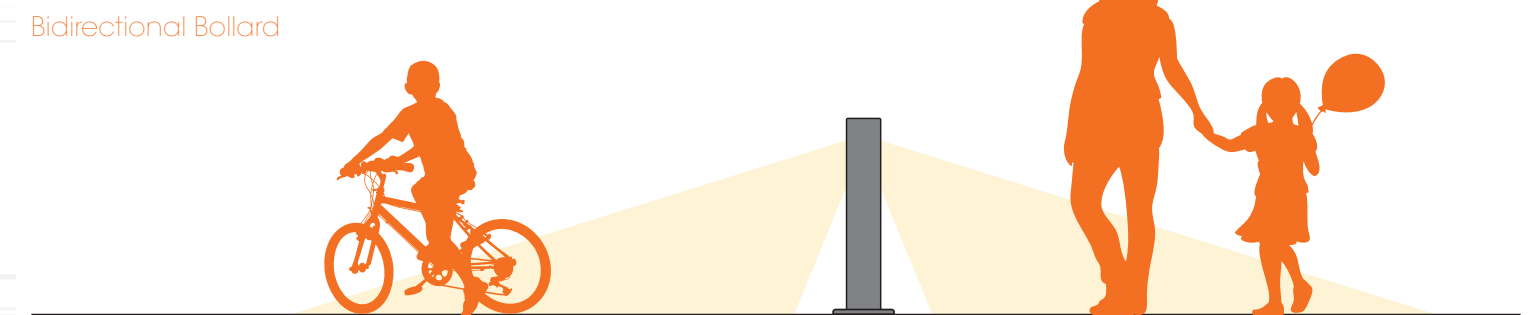


Options

- CLII connection box.
- Surge protector.
- NTC sensor.
- Presence detector.
- Lighting module on both sides:



Unidirectional Bollard



Bidirectional Bollard

- Black or personalised screen-printed on one face.

Facade Options

Finish Matched to Bollard



Black Screen Printed



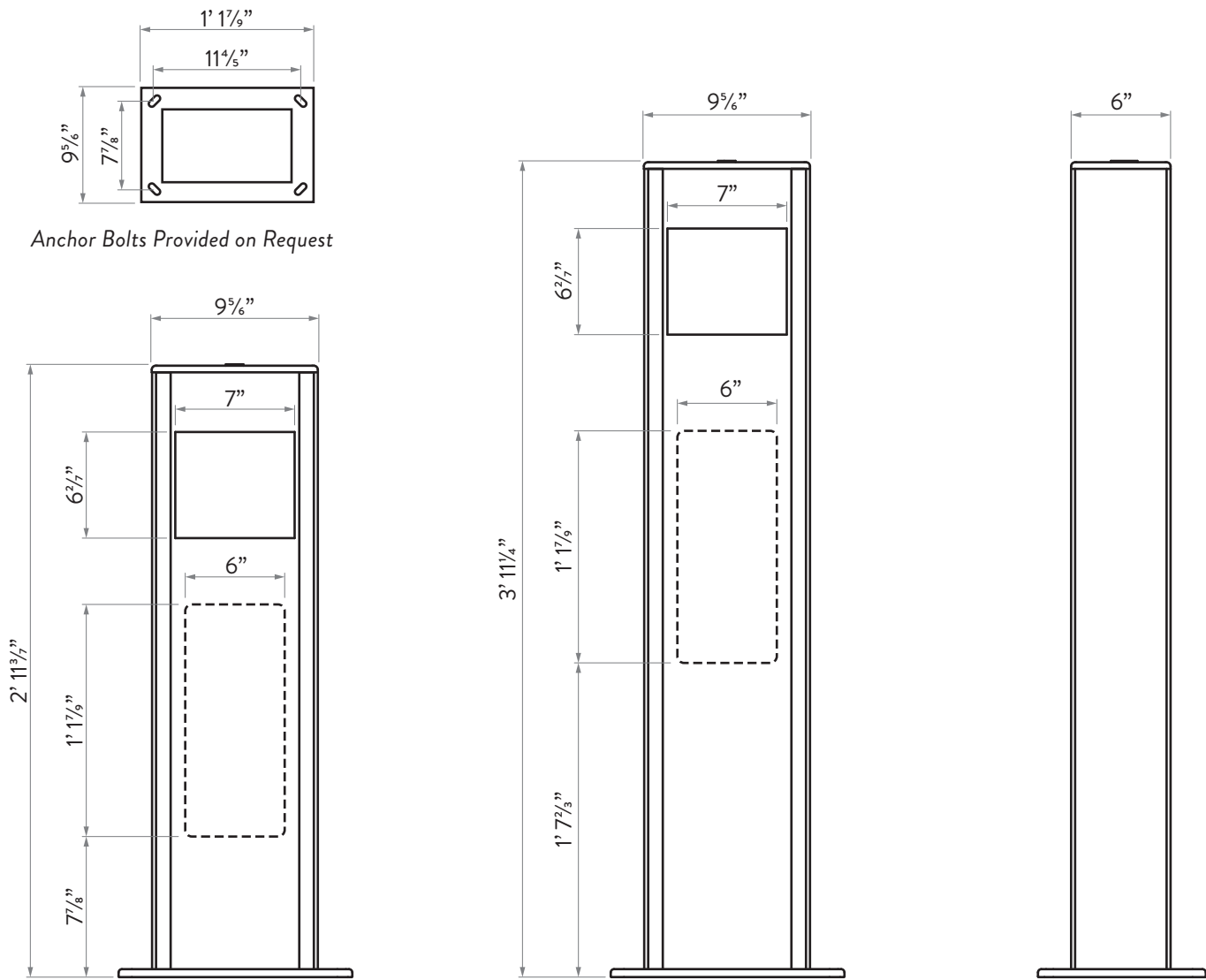
Black Screen Printed with Custom Design



Rev 20250923 - To continually offer the best product possible, we reserve the right to change, without notice, specifications and/or materials.



Dimensions



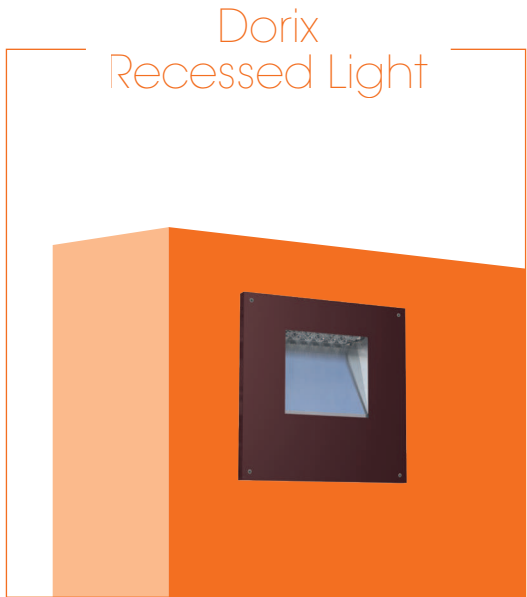
ORDERING INFORMATION

MODEL	SIZE	# OF LEDS	CCT	DRIVE CURRENT	DISTRIBUTION	LINE VOLTAGE	FINISH	ANCHOR BOLTS	BASE COVER	FACADE	OPTIONS
LUM-U <i>Lumea - Unidirectional (Single Sided Light)</i>	900 <i>900 Model - 2' 11"</i>	12 <i>12 LEDs</i>	3 <i>3000K</i>	35 <i>350 mA</i>	T4 <i>Type IV Optics</i>	1 <i>120-277v</i>	BLK <i>Black</i>	AB <i>Anchor Bolts Included</i>	FBC <i>Full Base Cover</i>	NG <i>No Glass</i>	PC <i>Photocell Receptacle</i>
	1200 <i>1200 Model - 3' 11"</i>		4 <i>4000K</i>	50 <i>500 mA</i>		3 <i>347-480v</i>	BRZ <i>Bronze</i>	BLANK <i>No Anchor Bolts</i>	ABC <i>Anchor Bolt Covers</i>	D <i>Standard Decorative Pattern</i>	DIM <i>0-10v Dimming</i>
LUM-B <i>Lumea - Bidirectional (Double Sided Light)</i>	D <i>Dorix Model - Recessed Wall Light</i>			70 <i>700 mA</i>			SLV <i>Silver</i>		BLANK <i>No Base Cover</i>	BP <i>Black Screen Printed</i>	LS <i>Lens Shield</i>
	C <i>Custom¹</i>						WHT <i>White</i>			C <i>Custom¹</i>	
							RAL # <i>Custom RAL Color</i>				

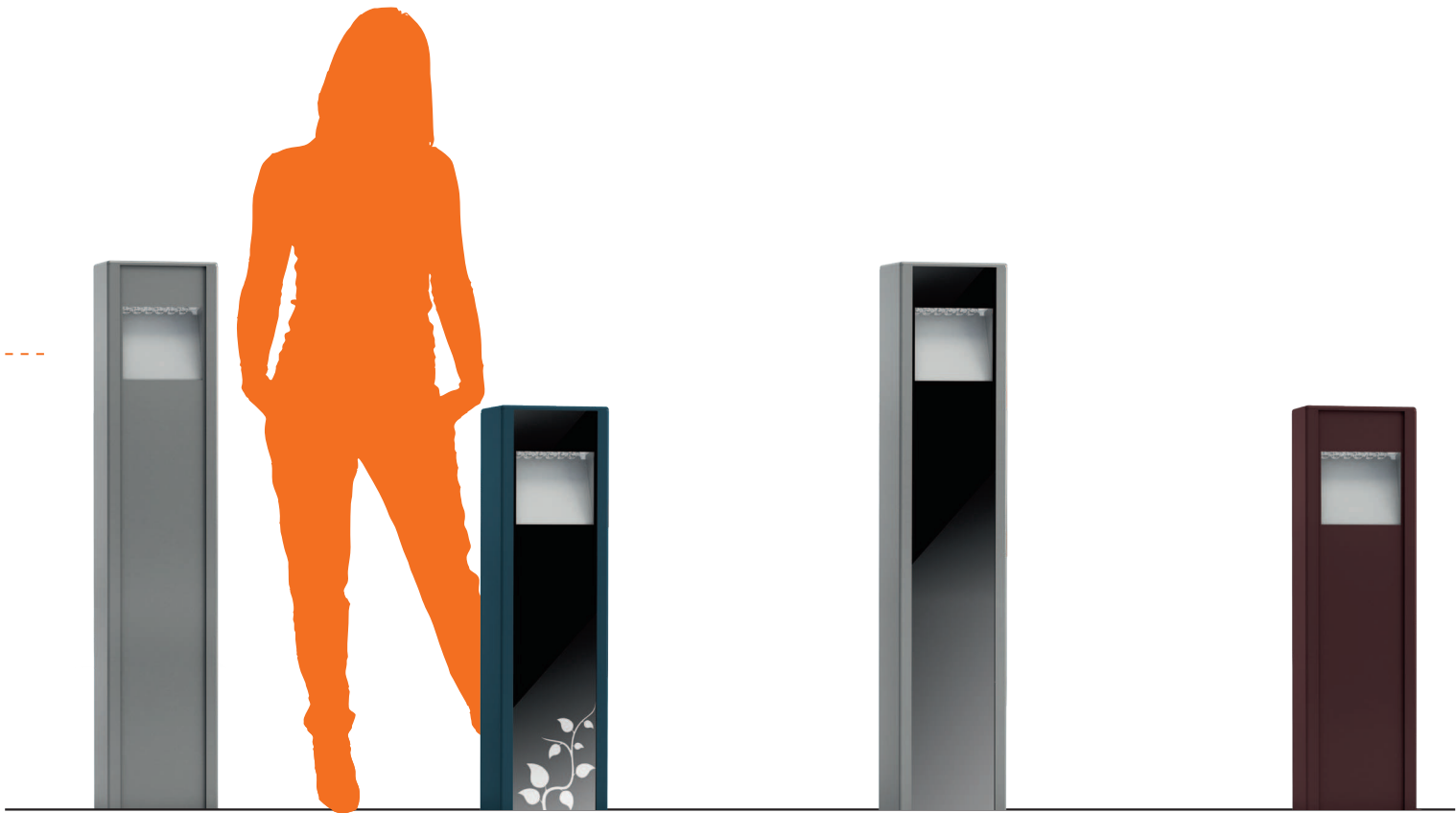
¹Consult factory for custom ordering information.
Factory assistance is available via phone at 1.720.370.0400 or via email at info@ragnigroupna.com.

Rev 20250923 - To continually offer the best product possible, we reserve the right to change, without notice, specifications and/or materials.

LUMÉA



6'



A  RAL 7042 B  RAL 5009 C  RAL 7042 D  RAL 8012

Rev 20250923 - To continually offer the best product possible, we reserve the right to change, without notice, specifications and/or materials.