

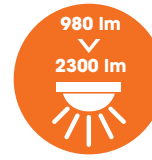
- ▶ Unidirectional or Bidirectional Lighting
- ▶ Available in 2 sizes: 3' or 4'
- ▶ Customizable Faceplate: Opt for Finish-Matched, Black Screen-Printed, or Custom Pattern Facade

Lumea Bollard is designed for the subtle illumination and delineation of pedestrian pathways in urban environments. Its minimalist rectangular form blends seamlessly into a wide range of architectural settings while delivering dependable, high-performance lighting.

Available in two heights with unidirectional or bidirectional light distribution, Lumea can be customized with the Dorix embedded spotlight, anti-vandalism protection, and silk screen decorative accents. Functional yet understated, Lumea enhances the visual identity and safety of public spaces without dominating the landscape.



Zhaga standard



LUMÉA

SPECIFICATIONS

Physical

| | Lumea 900 | Lumea 1200 |
|---------------------------|--|------------|
| Housing | Cast Aluminum | |
| Lens | Mechanical and Environmental (ME) Resistant Optical Lens | |
| Height (nominal) | 2' 11" | 3' 11" |
| Ingress Protection | IP66 | |
| Impact Resistance | IK10 | |

Electrical

| | |
|------------------------------|--|
| Power Consumption | From 15 to 27 Watts |
| LED Voltage | Standard Input Voltage from 120-277 Volts High Input Voltage from 347-480 Volts |
| Control | Integral LED Driver and Control System. On/Off or 0-10v Dimming |
| Electrical Class | I and II |
| Operating Temperature | -40° F to 122° F |
| Lumen Maintenance | L90 B10 > 100,000 Hours |
| Surge Suppression | Optional Surge Suppressor; Standard Electrical Shock Resistance of 6/10 kV (diff/comm) |

Photometrics

| | |
|-------------------------|--|
| Number of LEDs | 12 LEDs |
| CCT | 3000K and 4000K Standard; 2200K and 2700K Available on Request |
| Delivered Lumens | From 1201 to 2331 Lumens |
| Efficacy | From 81 to 88 Lumens per Watt |
| BUG Rating | B0-U3-G3 |

Certifications

NRTL Luminaire is Certified to North American Safety Standards and Requirements by Nationally Recognized Testing Laboratories.

Light Distributions

| CCT | # of LEDs | 350 mA | | | 500 mA | | | 700 mA | | |
|-------|-----------|--------|--------|----------|--------|--------|----------|--------|--------|----------|
| | | Watts | Lumens | Efficacy | Watts | Lumens | Efficacy | Watts | Lumens | Efficacy |
| 3000K | 12 | 15 | 1201 | 81 | 20 | 1650 | 83 | 27 | 2209 | 82 |
| 4000K | 12 | 15 | 1270 | 85 | 20 | 1741 | 88 | 27 | 2331 | 87 |

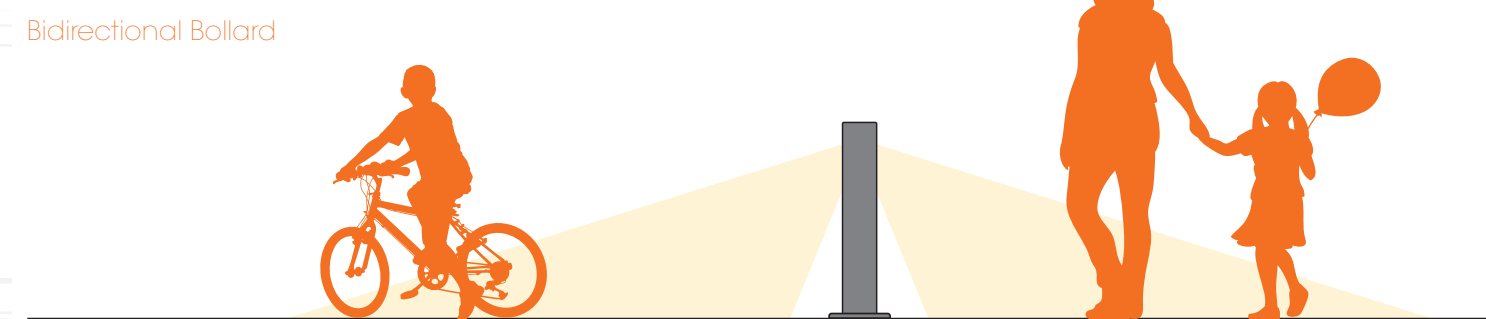
Rev 20260224 - To continually offer the best product possible, we reserve the right to change, without notice, specifications and/or materials.

Options

- CLII connection box.
- Surge protector.
- NTC sensor.
- Presence detector.
- Lighting module on both sides:



Unidirectional Bollard



Bidirectional Bollard

- Black or personalised screen-printed on one face.

Facade Options

Finish Matched to Bollard



Black Screen Printed

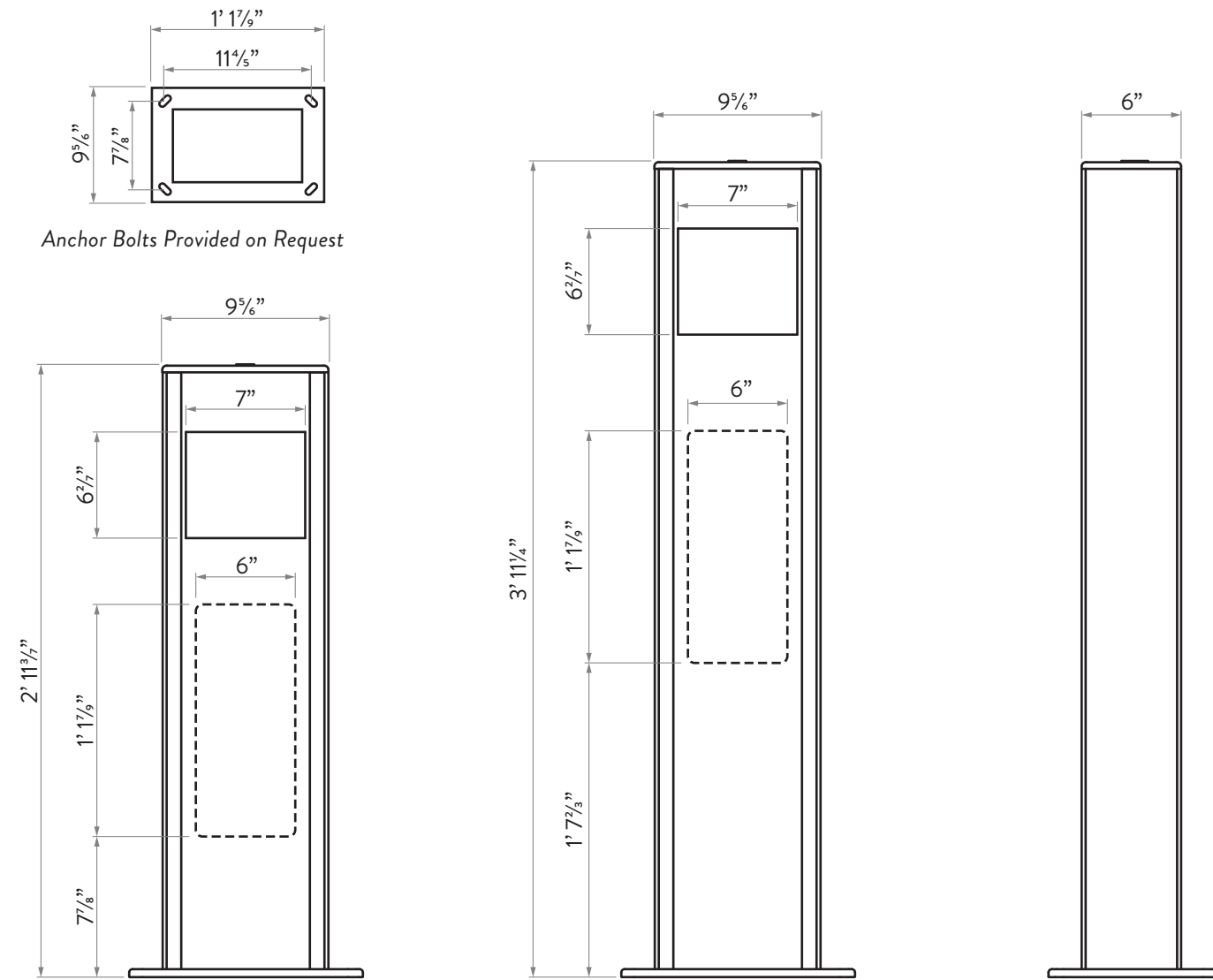


Black Screen Printed with Custom Design



Rev 20260224 - To continually offer the best product possible, we reserve the right to change, without notice, specifications and/or materials.

Dimensions



Anchor Bolts Provided on Request

ORDERING INFORMATION

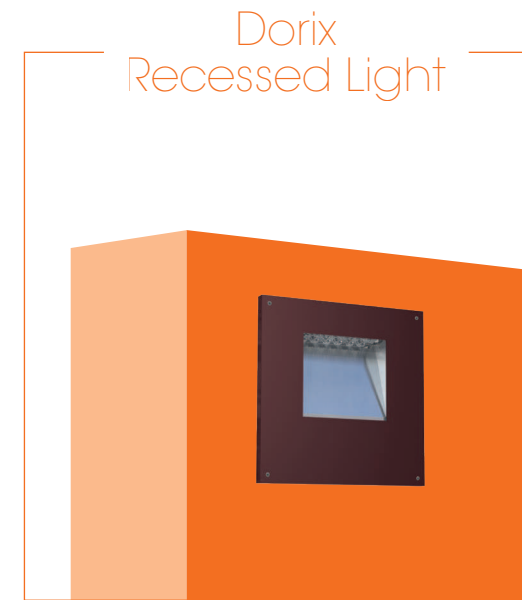
| MODEL | SIZE | # OF LEDS | CCT | DRIVE CURRENT | DISTRIBUTION | LINE VOLTAGE | FINISH | ANCHOR BOLTS | BASE COVER | FACADE | OPTIONS |
|--|--|---------------|-------|---------------|----------------------|---------------|---------------------------|-----------------------------|---------------------------|----------------------------------|------------------------------------|
| LUM-U Lumea - Unidirectional (Single Sided Light) | 900 900 Model - 2' 11" | 12 12 LEDs | 3000K | 35 350 mA | T4 Type IV Optics | 1 120-277v | BLK Black | AB Anchor Bolts Included | FBC Full Base Cover | NG No Glass | 7PIN 7-Pin Photocell Receptacle |
| | 1200 1200 Model - 3' 11" | 4 | 4000K | 50 500 mA | | 3 347-480v | BRZ Bronze | BLANK No Anchor Bolts | ABC Anchor Bolt Covers | D Standard Decorative Pattern | DIM 0-10v Dimming |
| LUM-B Lumea - Bidirectional (Double Sided Light) | D Dorix Model - Recessed Wall Light | | | 70 700 mA | | | SLV Silver | | BLANK No Base Cover | BP Black Screen Printed | LS Lens Shield |
| | C Custom ¹ | | | | | | WHT White | | | C Custom ¹ | |
| | | | | | | | RAL # Custom RAL Color | | | | |

¹Consult factory for custom ordering information.

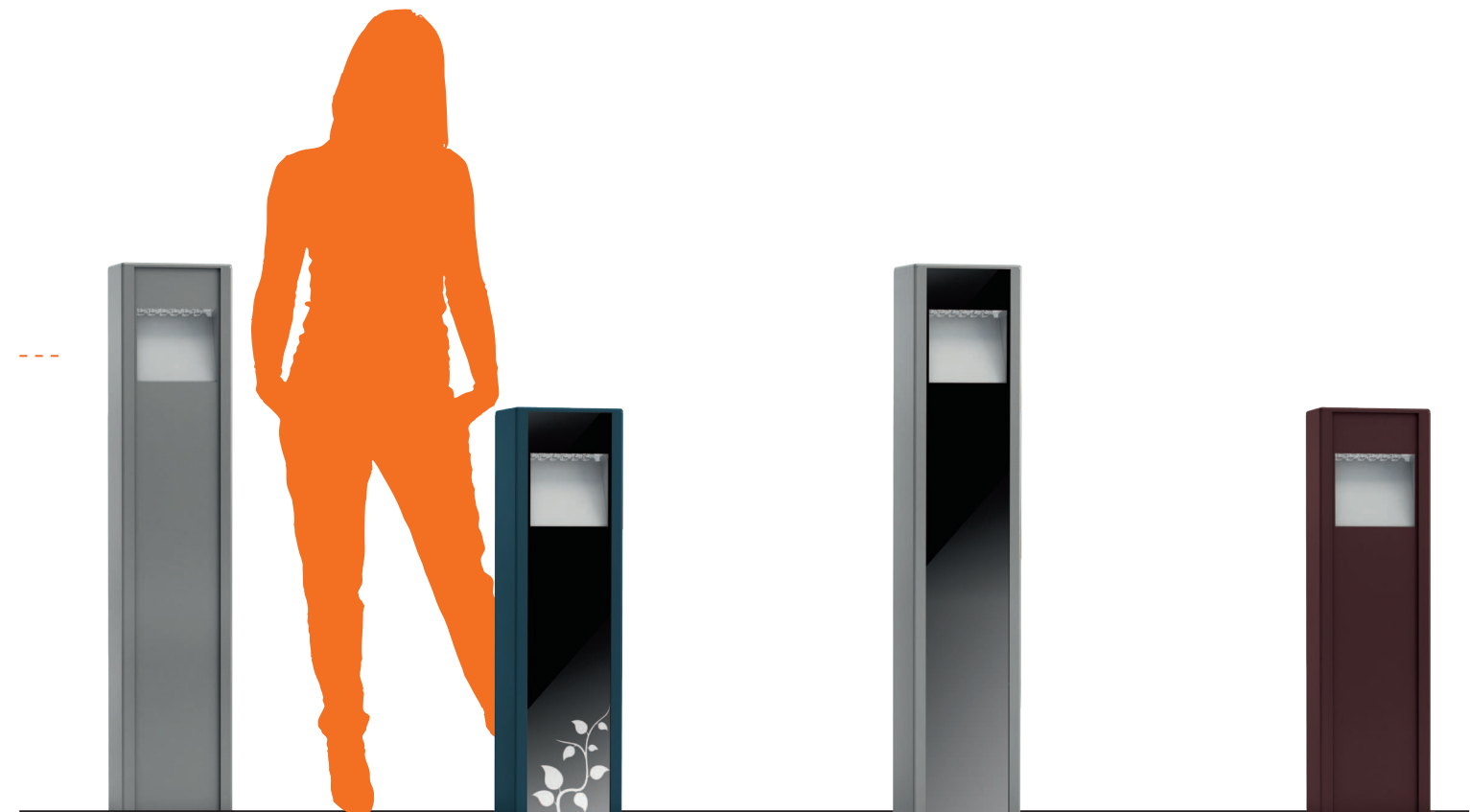
Factory assistance is available via phone at 1.720.370.0400 or via email at info@ragnigroupna.com.

Rev 20260224 - To continually offer the best product possible, we reserve the right to change, without notice, specifications and/or materials.

LUMÉA



6'



A | ■ RAL 7042

B | ■ RAL 5009

C | ■ RAL 7042

D | ■ RAL 8012

Rev 20260224 - To continually offer the best product possible, we reserve the right to change, without notice, specifications and/or materials.