



AC	120V-277V
	347V-480V



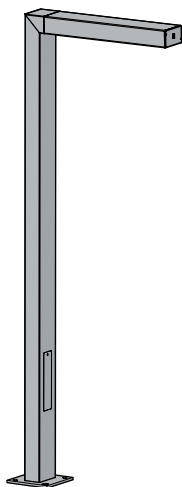
RAGNI

Operating position: Horizontal

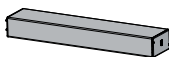


If the external cable, light source or driver contained in this light are damaged, they have to be exclusively replaced by the manufacturer, maintenance agent or an equally qualified worker, in order to avoid any risk.

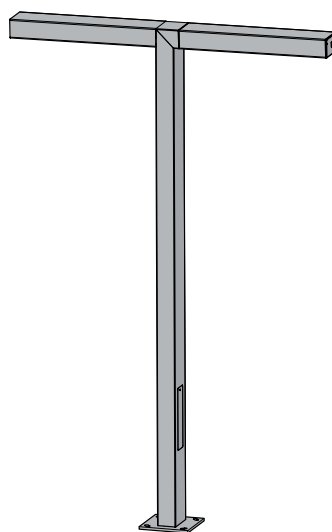
Dimensions



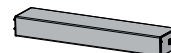
Domitienne 1 light



Wall-mounted



Domitienne 2 lights



Surface mounted

Luminaire

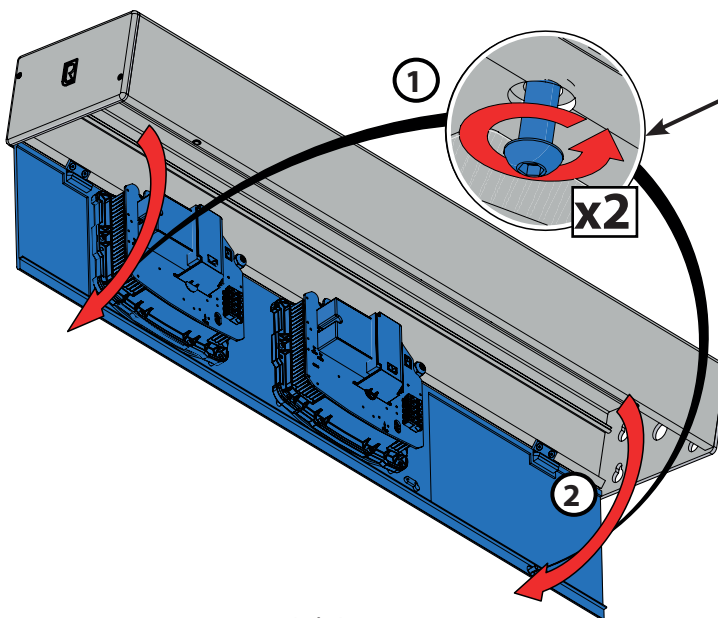
	Domitienne		
Length	32"	47"	59"
Dimensions	6" x 10"		
Weight (lbs)	24	38	42

Poles

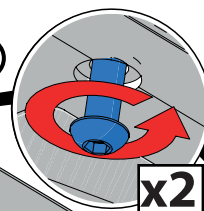
	Domitienne Poles				
Height	13'	16'	20'	23'	26'
Dimensions	6" x 10"				
Weight (lbs)	272	326	380	434	488

Installations: Domitienne V2

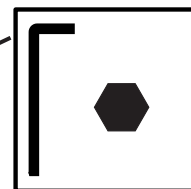
1



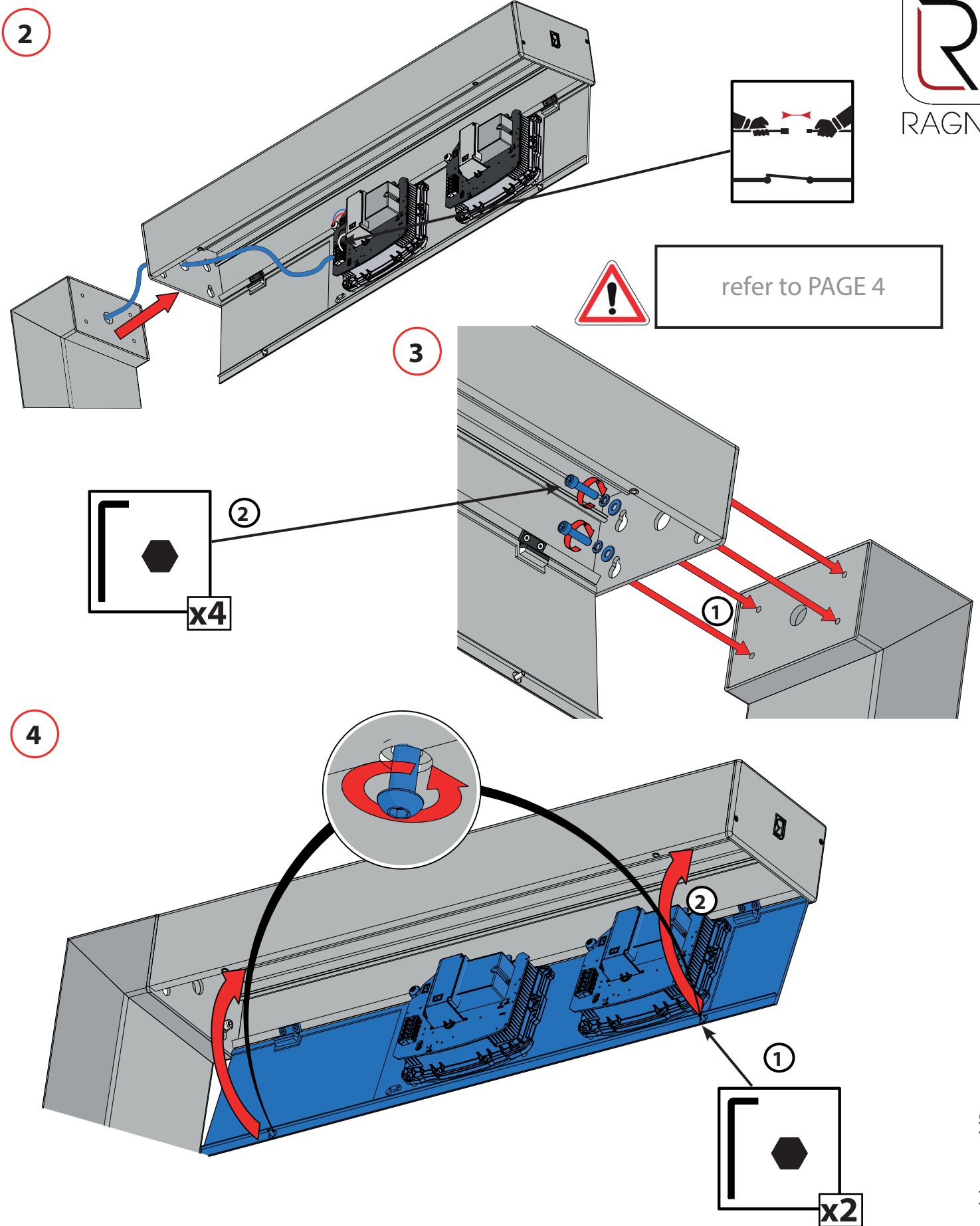
1



x2

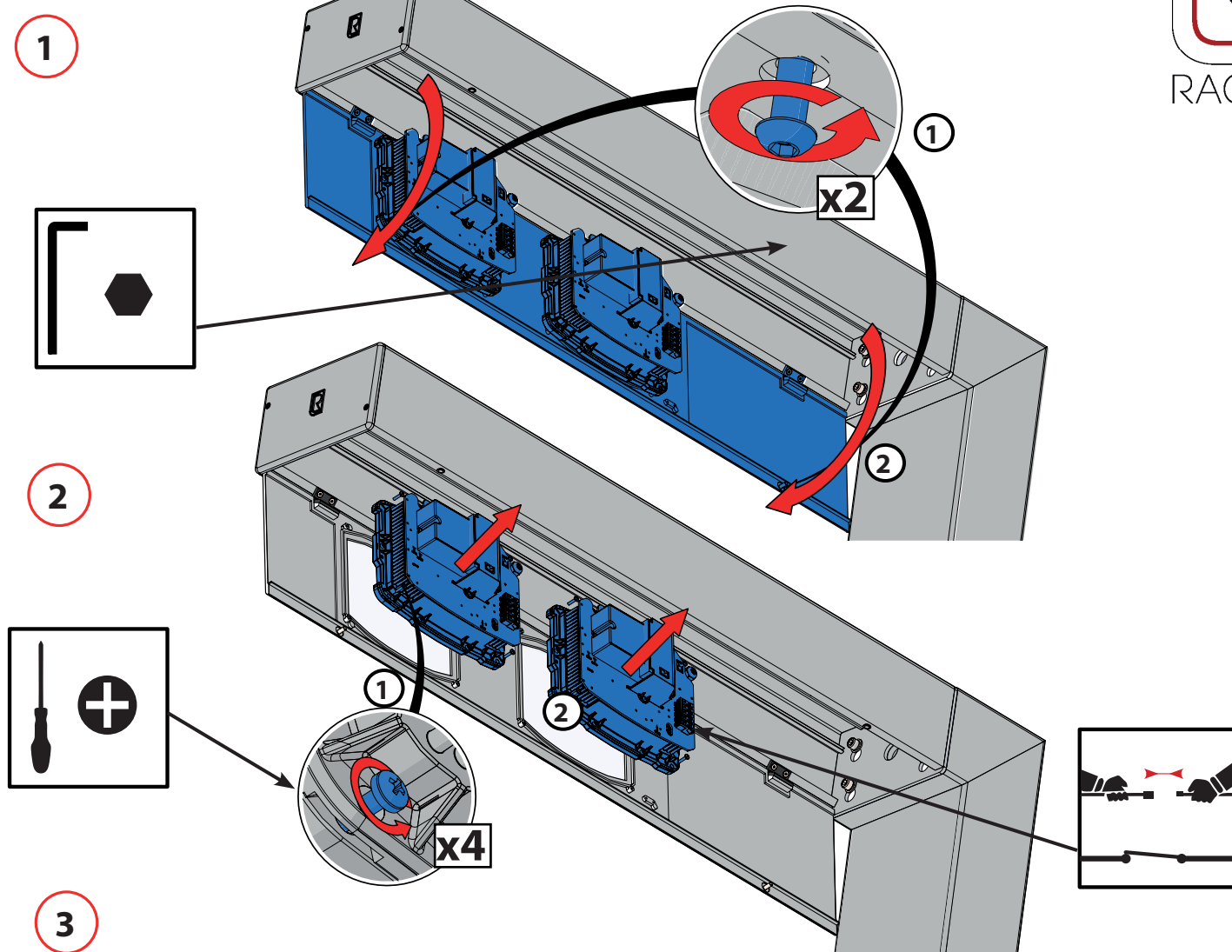


2



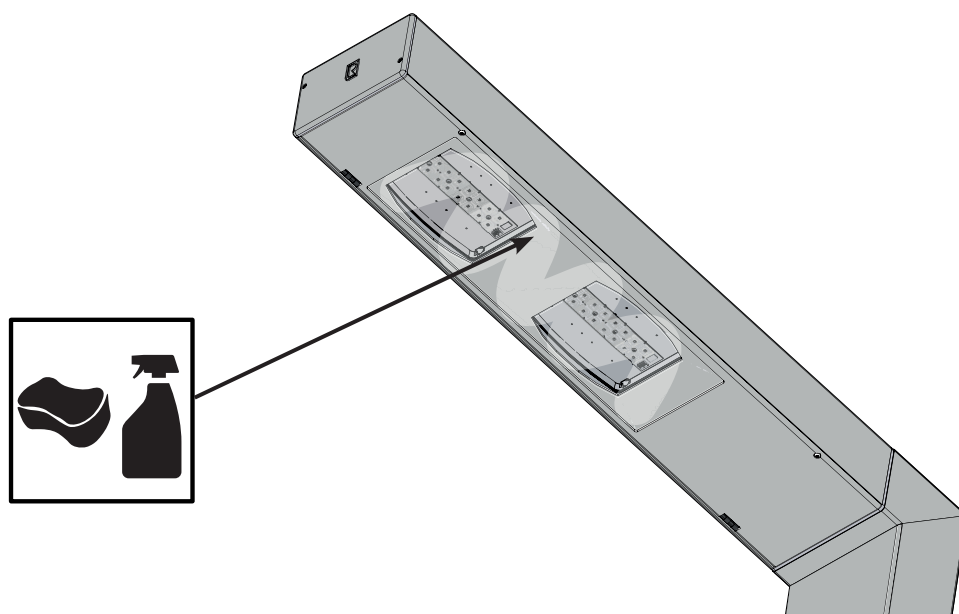
NOTE:
Identical mounting procedure for an additional lamp.

Maintenance

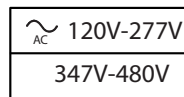


Put the system back by making all the previous operations in the reverse order.

Cleaning



Domitienne FLEX

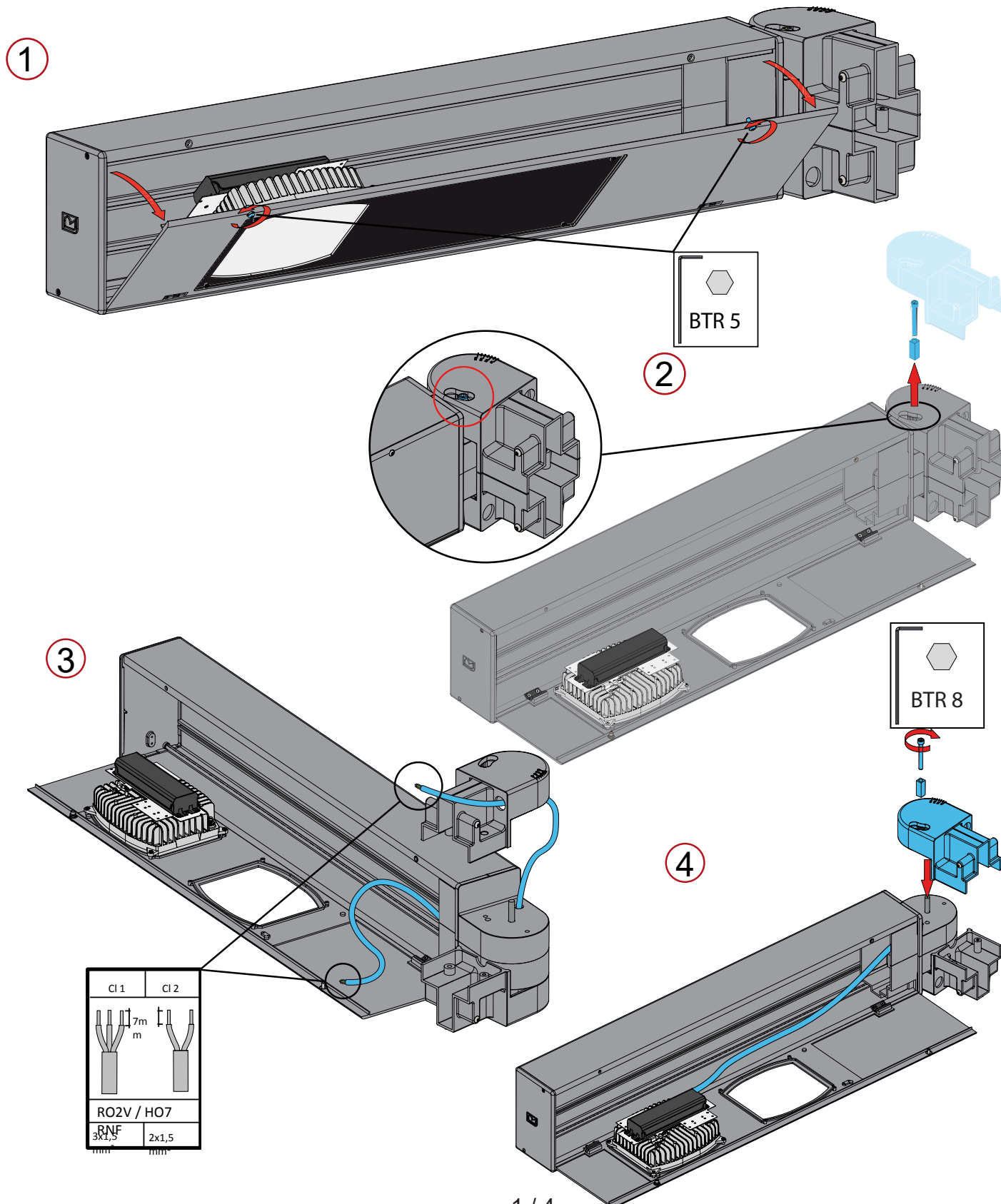


Operating position: Horizontal

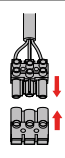
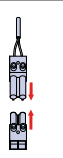


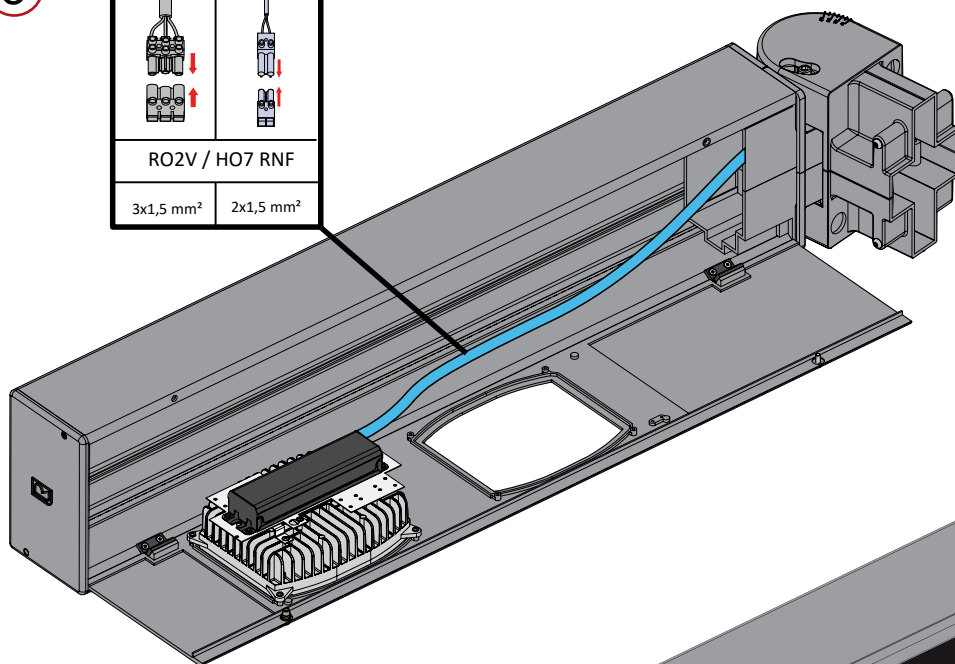
If the external cable, light source or driver contained in this light are damaged, they have to be exclusively replaced by the manufacturer, maintenance agent or an equally qualified worker, in order to avoid any risk.

Installation

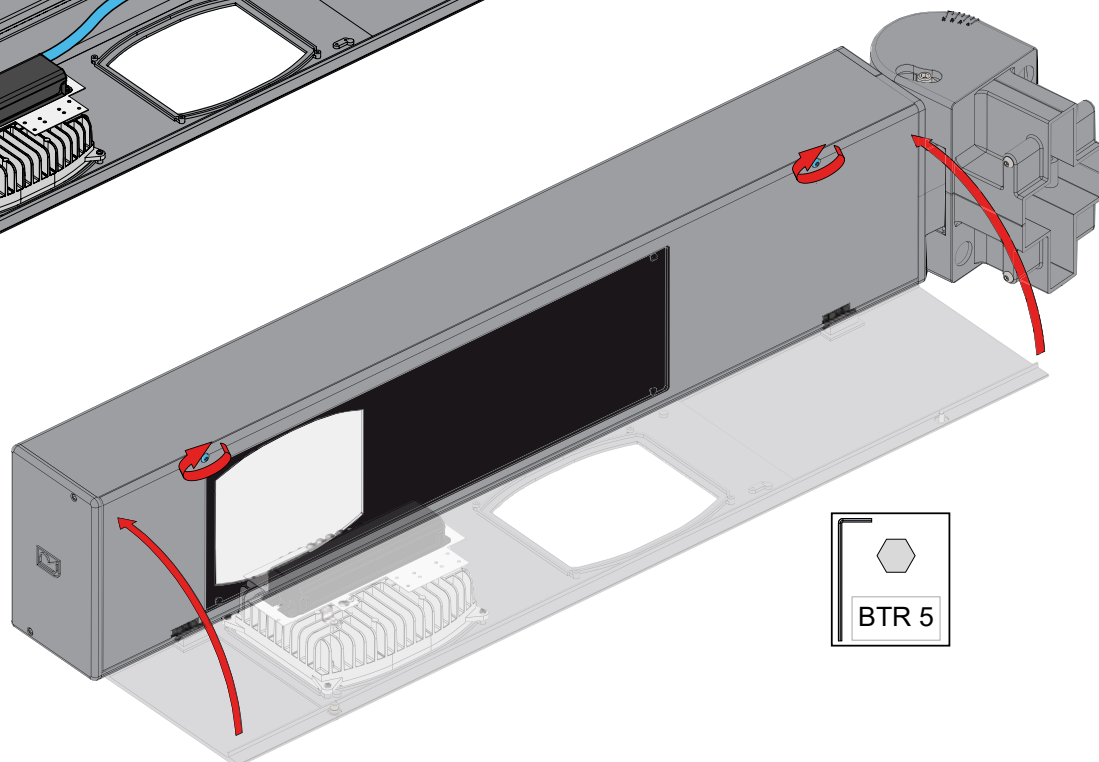


5

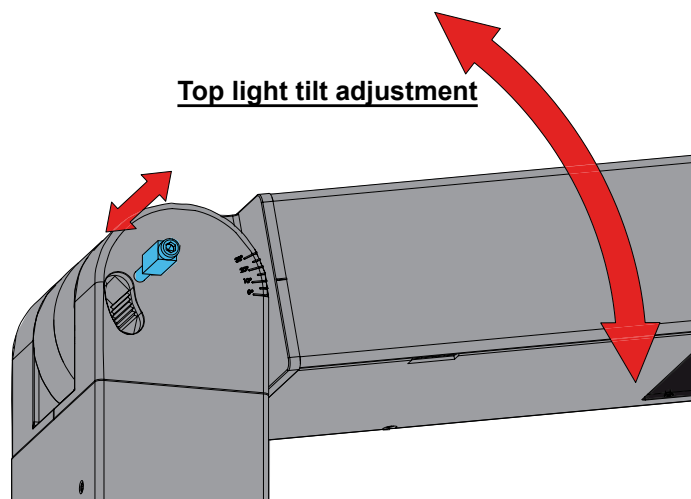
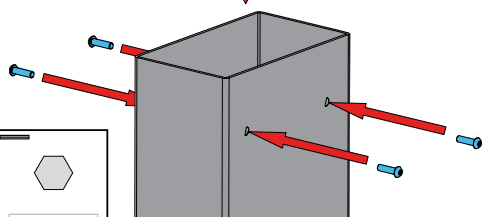
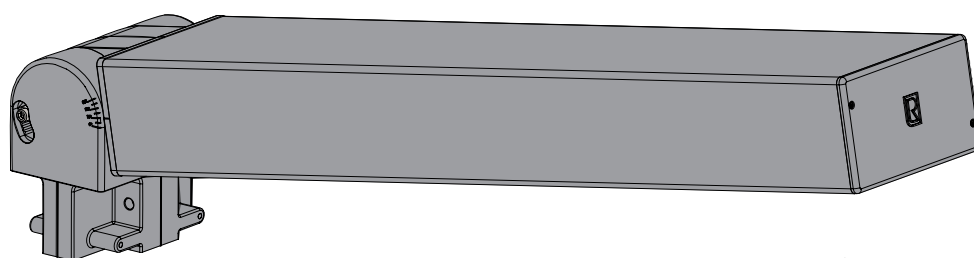
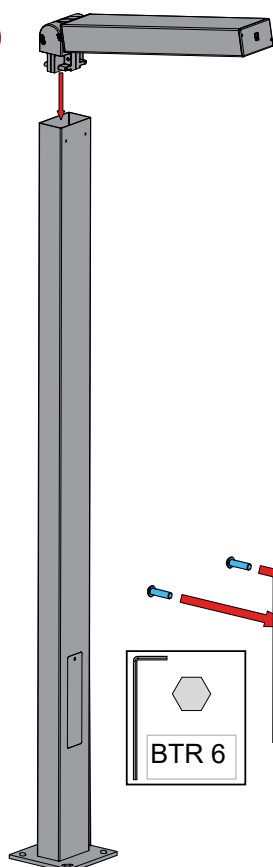
cl 1	cl 2
	
RO2V / HO7 RNF	
3x1,5 mm ²	2x1,5 mm ²



6

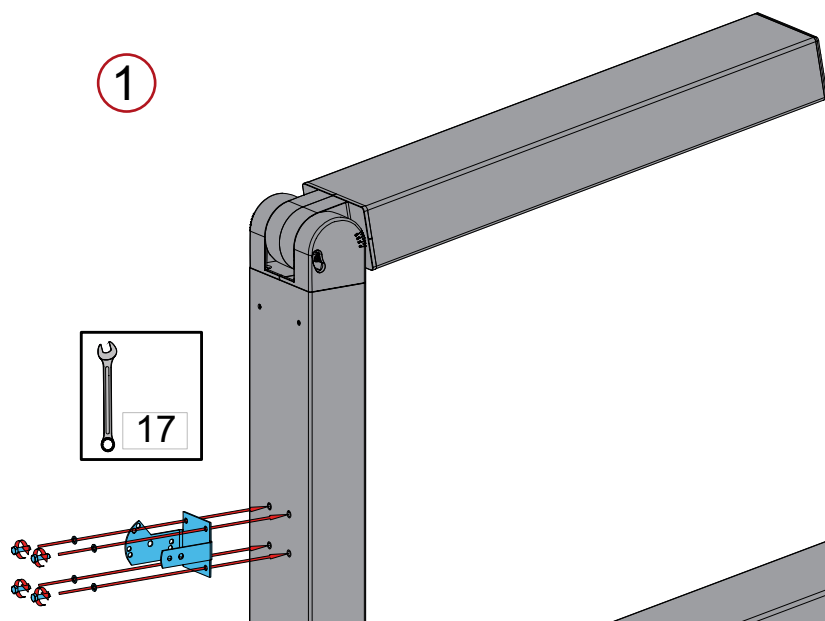


7

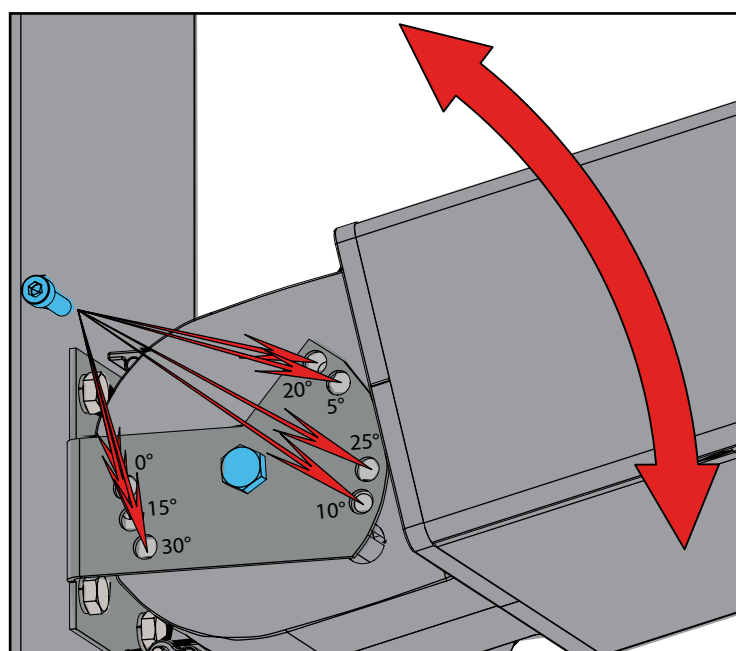
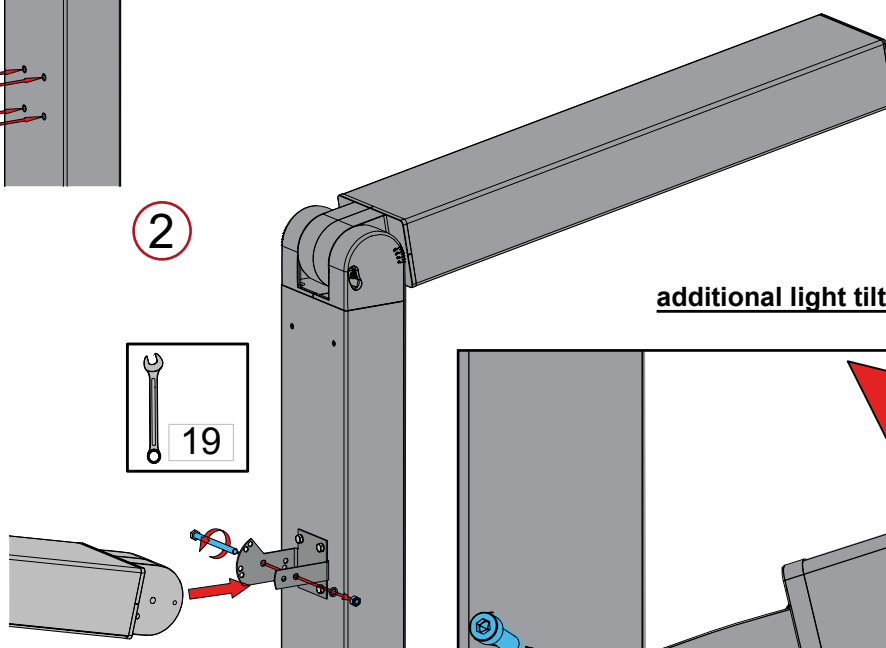


ADDITIONNAL LIGHT INSTALLATION

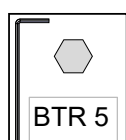
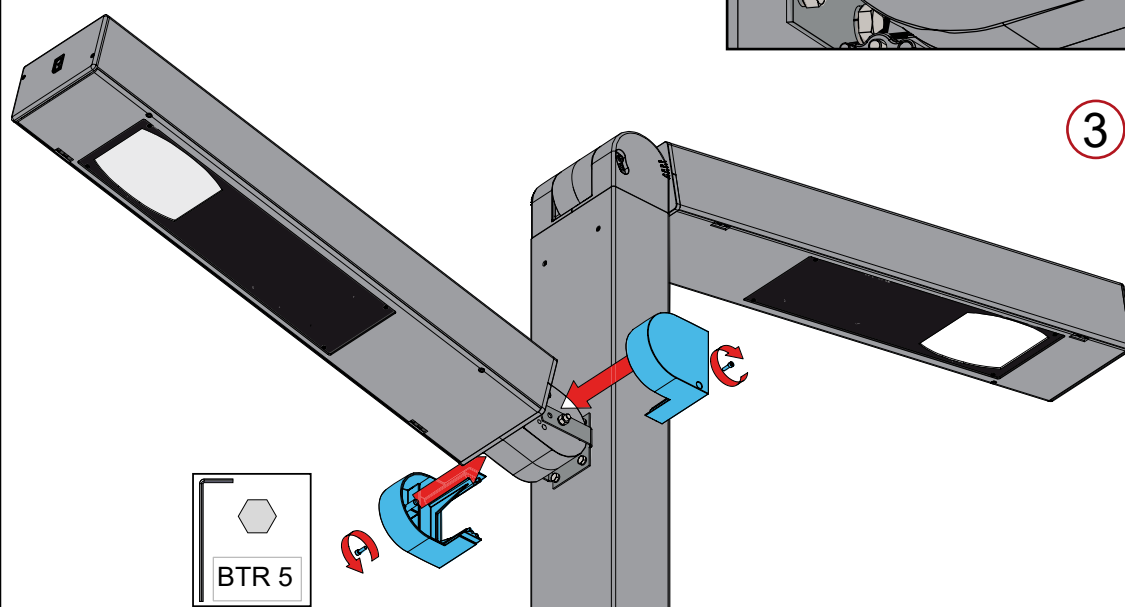
1



2



3



Lighting wiring

Electrical connections of the junction box have to main the same insulation class the luminaire

Nominal voltage	120V-277V 347V-480V Only for luminaires with drivers
Fixation method	Depend on the junction box

Type of cable	HO7 RNF	
Number of poles and terminal section	<div> <div> <div>2x 1.5mm²</div> </div> <div> <div>3G 1.5mm²</div> </div> <div> <div>4x 1.5mm²</div> </div> <div> <div>5G 1.5mm²</div> </div> <div> <div>5x 1.5mm²</div> </div> <div> <div>5x 1.5mm² - D4i</div> </div> </div>	
Terminal identification	Driver in luminaire 	Driver at the base of the pole <div>220/240V</div>